



Watch the video:
dstonline.co.uk/content/connect.mp4



Ford Transit Custom & Tourneo 2014-on Short Wheel Base & Long Wheel Base

Fitting instructions for: Aluminium Roof Rails - Satin Silver and Black



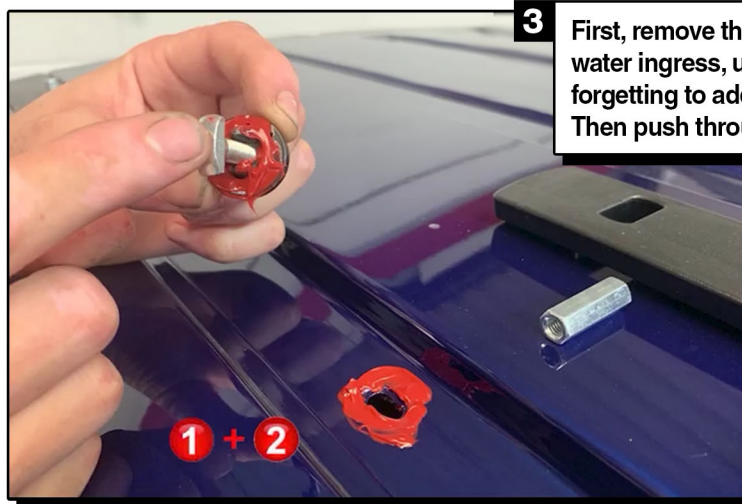
The rails attach to the roof in three places. Positions one and two at the rear of the vehicle are similar, and we will cover these on this page. Position three is slightly more complex and we will cover that over the page.



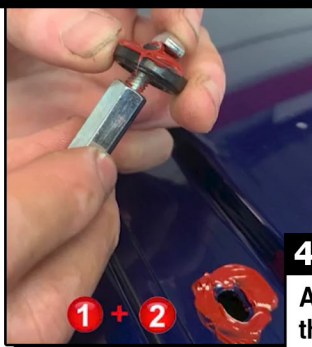
Position 1 has a plastic foot with 1 hole. Whilst position 2 has a foot with 2 holes. Both have a T-bolt, a long hexagonal nut, a large plastic washer with lugs, & a hex-nut (a medium one for position 1 at the rear, and a slightly longer one for 2) In the image shown, we have also fitted the little washer.



Position three has two unique plastic feet & a bolt with a long plastic holder, the same long hexagonal nut as before, a medium bolt with a washer, a big flat plastic coated washer, and a big flat metal washer. But notice that the plastic coated washer for position three has no lugs.



3 First, remove the blanking covers from the top of the vehicle. Then to prevent water ingress, use the included Red Instant Gasket paste as shown, not forgetting to add some to the large plastic washer and the side with the lugs. Then push through the T-bolt.



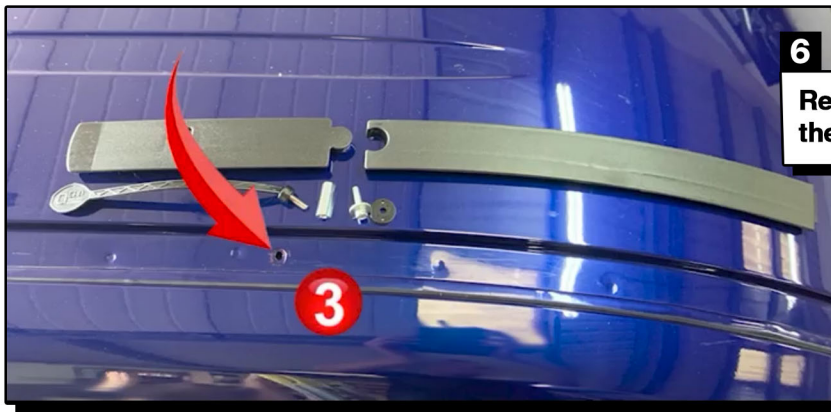
4 Attach the hexagonal nut, slide the entire assembly into the hole, and turn in place, then tighten with the correct sized spanner.

5 Then place the correct foot, as outlined earlier, over the top of the bolt. For position two, the rear slot is used on the foot.



For position 3
turn over...





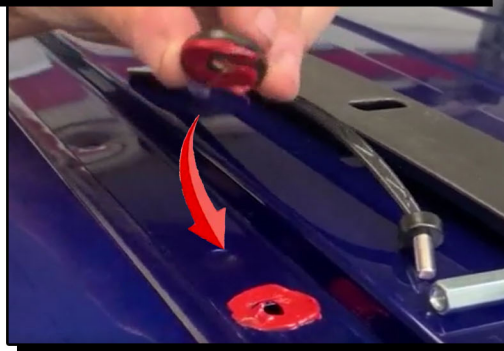
6

Remove the blank and carefully, partially remove the head liner for access.



7

Remember, we want the washer with no lugs. Cover in Red Instant Gasket paste as before and place over the hole in the roof.



8

Important Step



Then using the special bolt holder, add the big flat metal washer over the top of the bolt. **THIS IS AN IMPORTANT STEP** because without the washer, over-tightening can pull the bolt through the roof! Then push the bolt through the hole in the roof and attach the Hex Nut.



9



1

2

3

Place on the two plastic feet. Replace the head liner. Then after attaching the rubber feet to the rail, place the rail in position over the hexagonal nuts & using the Hex Bolts & Allen key, tighten the bolts JUST SLIGHTLY, just until they grab. Then reposition the bar in line with the feet, then tighten all the way.



10

Finish off by popping in the nut covers over the holes in the bar. And thats it! Now repeat for the other side.

